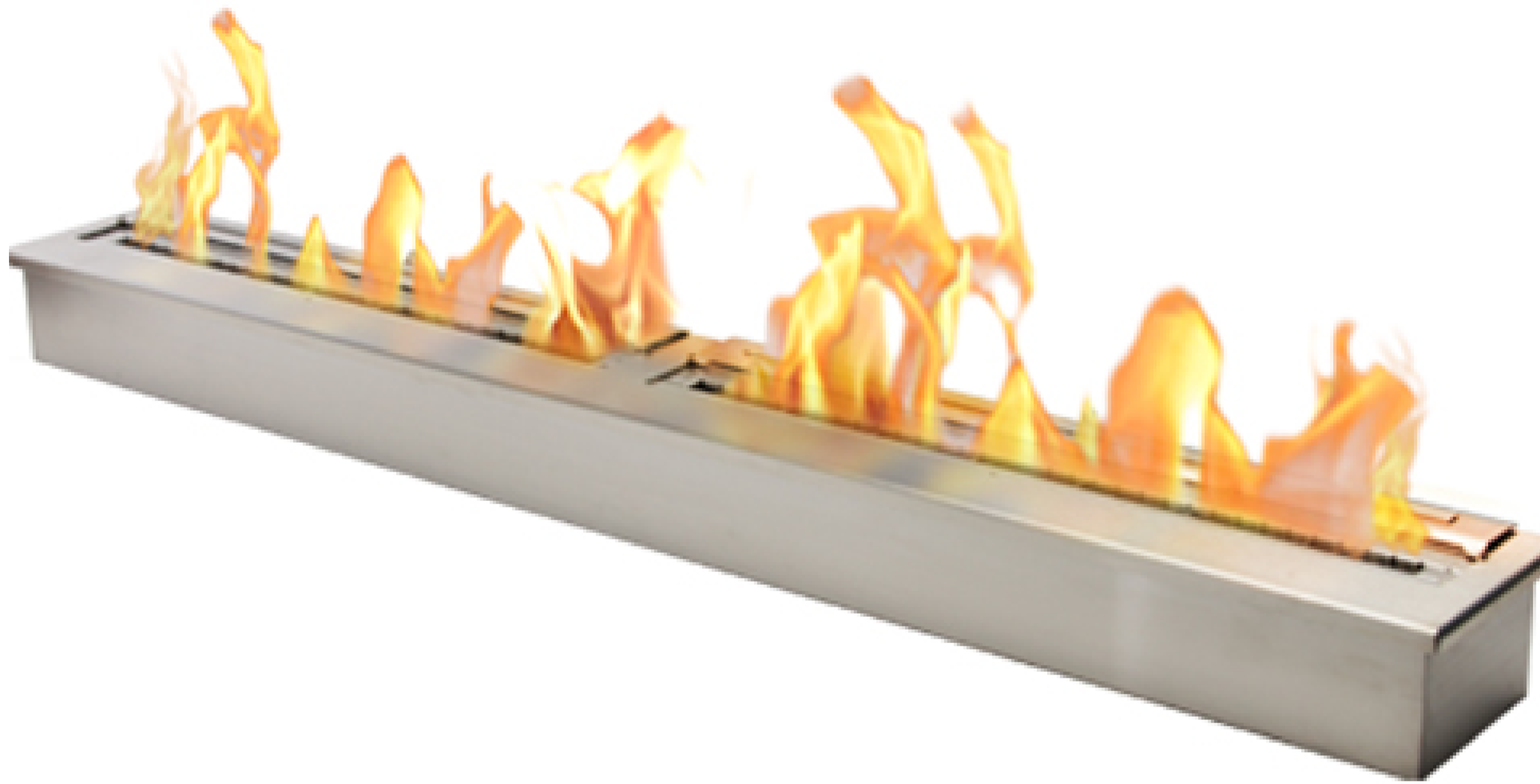


Burner Collection

60" Burner



Black



Included Accessories



Lighting Rod

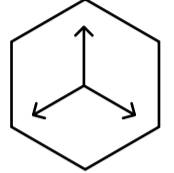
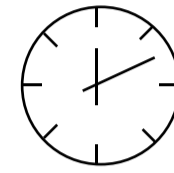
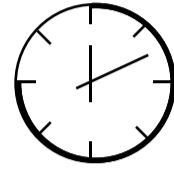
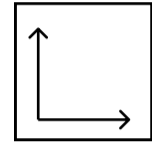
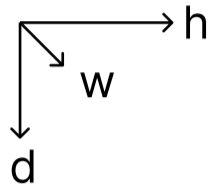
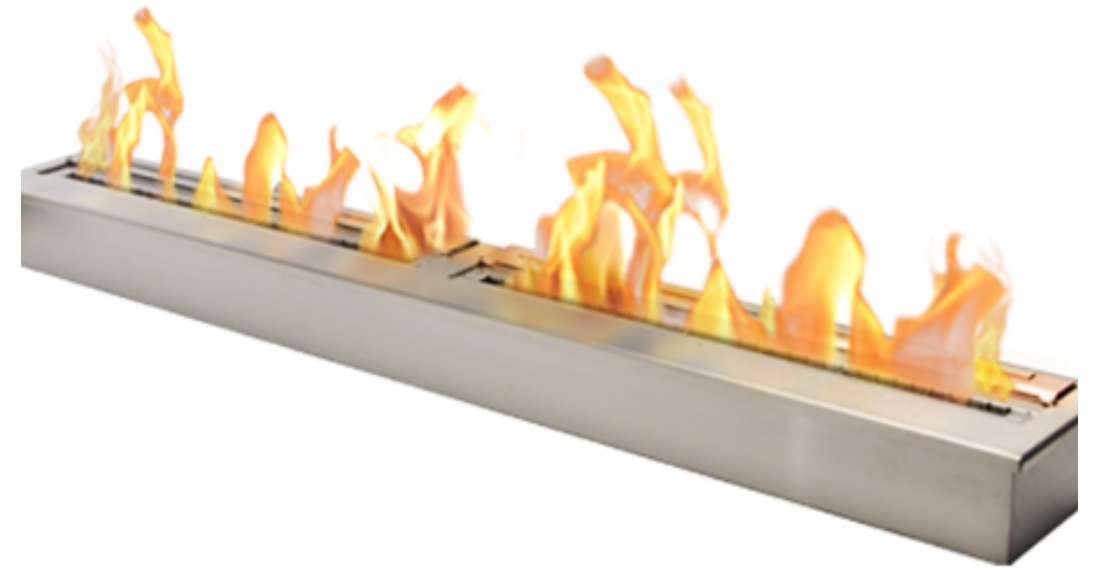


Lighter



Funnel

Burner Collection 60" Burner



Dimensions H x W x D mm/in	Fuel Capacity	Heats on Average (indoors)	Fuel Consumption	Thermal Output Net (MAX)	Approx. Burn Time	Minimum Room Size (per burner)
115 x 1524 x 193 4.5 x 60.0 x 7.6	18L	Over 158m ² [1,640 ft ²]	1.80L per hour	43,000 BTU/h 12.6 Kw	10 hours	400 sq. ft.

Awards

2010 Winner Outdoor Hearth Products
Vesta Awards

Application

Indoor & Outdoor

Burner Colour

Stainless Steel
 Black

Materials

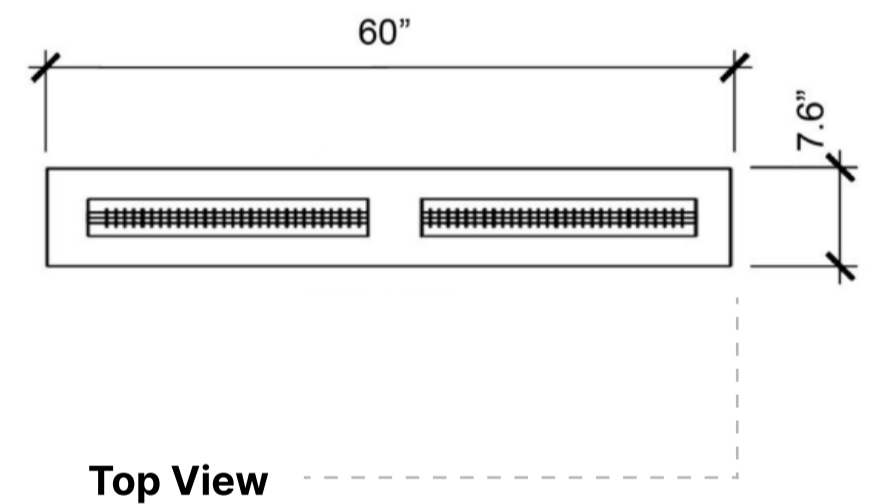
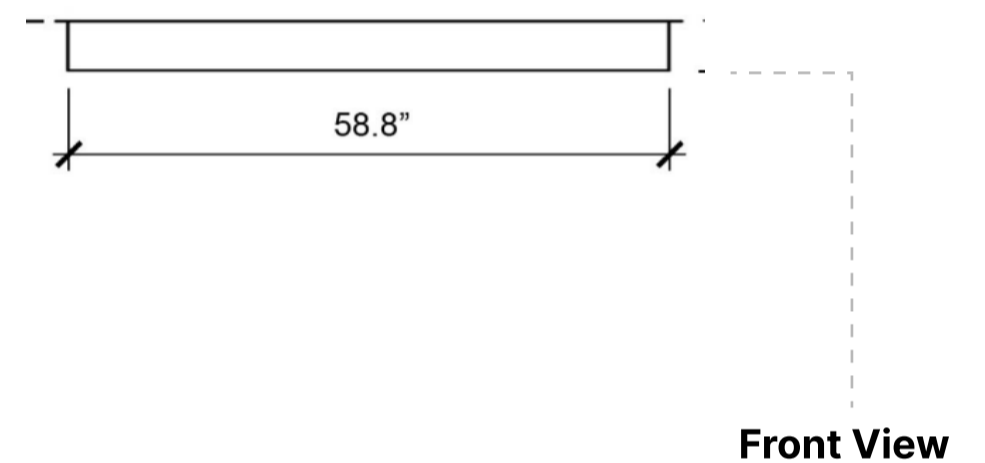
Grade 304 Stainless Steel Construction

Approx. Weight

66 lbs

Fuel Type

Bio Ethanol Fuel



Inserting within a firebox setting:

The Bio Flame 60" BURNER can only be fitted into a non-combustible firebox that has minimum clearances of 68"W x 24"H x 16"D.

Custom made fireboxes must:

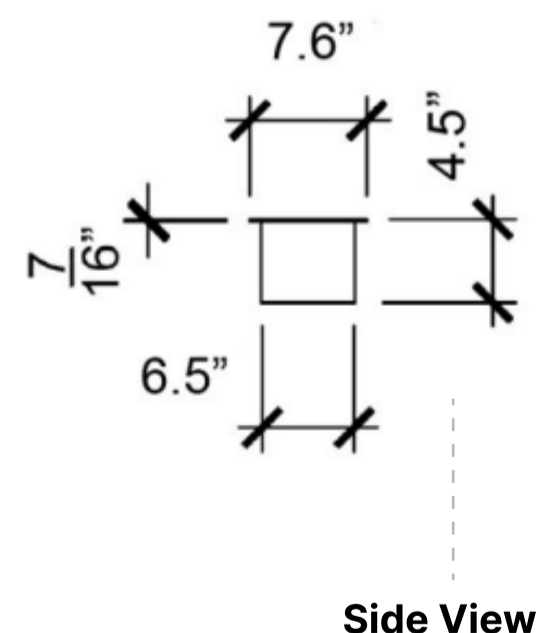
- Be made out of a non-combustible material such as stainless steel
- *When recessing the tray into a non-combustible base with no firebox, the overhead clearance required is 60"MIN. to the nearest combustible*



Global Compliance
All burners are UL Listed in accordance with ANSI/
UL1370 in the USA and comply with the ACCC Safety
Mandate for Australia.



Lifetime Warranty



FOR MORE INFORMATION PLEASE REFERENCE THE CLEARANCE & INSTALLATION MANUAL

*Dimensions may vary by 2% (plus or minus) due to material attributes. Template not provided. The Bio Flame recommends using the actual fireplace or burner model when making final cut out

